



**PRICELIST - BOOKING CALENDER - FLOOR PLANS 2026**  
All prices are in EURO

**Explanation:**

**A** = Available

**EV** = Rent of entire Villa only

**O** = Occupied

**S** = Special deal

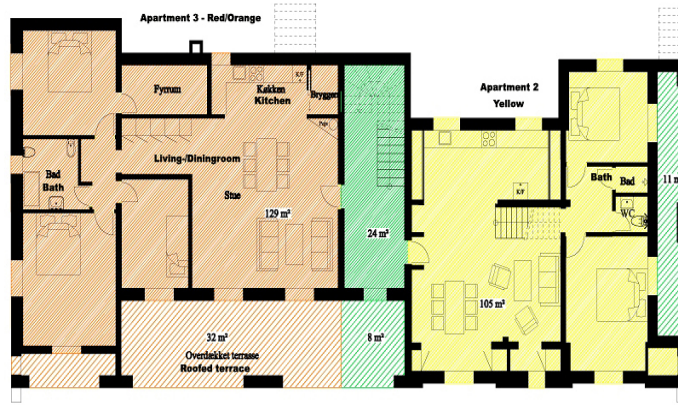
**R** = Reserved

Week	From	To	Entire Villa	Apartment 1		Apartment 2		Apartment 3	
				1. floor (Blue) 5 person	Ground right (yellow) 5 person	Ground left (red/orange) 5 person	Ground right (yellow) 5 person	Ground left (red/orange) 5 person	
1	27.dec	03.jan	A 3.898	EV/A	Rent of entire Villa only	EV/A	Rent of entire Villa only	EV/A	Rent of entire Villa only
2	03.jan	10.jan	A 3.898	A	1.377	A	1.377	A	1.181
3	10.jan	17.jan	A 3.898	A	1.377	A	1.377	A	1.181
4	17.jan	24.jan	A 3.898	A	1.377	A	1.377	A	1.181
5	24.jan	31.jan	A 3.898	A	1.377	A	1.377	A	1.181
6	31.jan	07.feb	A 3.898	A	1.377	A	1.377	A	1.181
7	07.feb	14.feb	A 3.898	A	1.377	A	1.377	A	1.181
8	14.feb	21.feb	A 3.898	A	1.377	A	1.377	A	1.181
9	21.feb	28.feb	A 3.898	A	1.377	A	1.377	A	1.181
10	28.feb	07.mar	A 3.898	A	1.377	A	1.377	A	1.181
11	07.mar	14.mar	A 3.898	A	1.377	A	1.377	A	1.181
12	14.mar	21.mar	A 3.898	A	1.377	A	1.377	A	1.181
13	21.mar	28.mar	A 3.898	A	1.377	A	1.377	A	1.181
14	28.mar	04.apr	A 3.898	A	1.377	A	1.377	A	1.181
15	04.apr	11.apr	A 3.898	A	1.377	A	1.377	A	1.181
16	11.apr	18.apr	A 5.499	A	1.831	A	1.831	A	1.580
17	18.apr	25.apr	A 5.499	A	1.831	A	1.831	A	1.580
18	25.apr	02.maj	A 5.499	A	1.831	A	1.831	A	1.580
19	02.maj	09.maj	A 5.499	A	1.831	A	1.831	A	1.580
20	09.maj	16.maj	A 5.499	A	1.831	A	1.831	A	1.580
21	16.maj	23.maj	A 5.499	A	1.831	A	1.831	A	1.580
22	23.maj	30.maj	A 6.681	A	2.337	A	2.337	A	2.007
23	30.maj	06.jun	A 6.681	A	2.337	A	2.337	A	2.007
24	06.jun	13.jun	A 6.681	A	2.337	A	2.337	A	2.007
25	13.jun	20.jun	A 6.681	A	2.558	A	2.558	A	2.194
26	20.jun	27.jun	A 6.681	A	2.558	A	2.558	A	2.194
27	27.jun	04.jul	A 9.636	A	Rent of entire Villa only	A	Rent of entire Villa only	A	Rent of entire Villa only
28	04.jul	11.jul	A 9.636	A	Rent of entire Villa only	A	Rent of entire Villa only	A	Rent of entire Villa only
29	11.jul	18.jul	A 9.636	A	Rent of entire Villa only	A	Rent of entire Villa only	A	Rent of entire Villa only
30	18.jul	25.jul	A 9.636	A	Rent of entire Villa only	A	Rent of entire Villa only	A	Rent of entire Villa only
31	25.jul	01.aug	A 9.636	A	Rent of entire Villa only	A	Rent of entire Villa only	A	Rent of entire Villa only
32	01.aug	08.aug	A 9.636	A	Rent of entire Villa only	A	Rent of entire Villa only	A	Rent of entire Villa only
33	08.aug	15.aug	A 9.636	A	Rent of entire Villa only	A	Rent of entire Villa only	A	Rent of entire Villa only
34	15.aug	22.aug	A 7.238	A	Rent of entire Villa only	A	Rent of entire Villa only	A	Rent of entire Villa only
35	22.aug	29.aug	A 7.238	A	Rent of entire Villa only	A	Rent of entire Villa only	A	Rent of entire Villa only
36	29.aug	05.sep	A 5.954	A	2.105	A	2.105	A	1.808
37	05.sep	12.sep	A 5.954	A	2.105	A	2.105	A	1.808
38	12.sep	19.sep	A 5.954	A	2.105	A	2.105	A	1.808
39	19.sep	26.sep	A 5.954	A	2.105	A	2.105	A	1.808
40	26.sep	03.okt	A 5.182	A	1.832	A	1.832	A	1.571
41	03.okt	10.okt	A 5.182	A	1.832	A	1.832	A	1.571
42	10.okt	17.okt	A 5.182	A	1.832	A	1.832	A	1.571
43	17.okt	24.okt	A 3.898	A	1.377	A	1.377	A	1.181
44	24.okt	31.okt	A 3.898	A	1.377	A	1.377	A	1.181
45	31.okt	07.nov	A 3.898	A	1.377	A	1.377	A	1.181
46	07.nov	14.nov	A 3.898	A	1.377	A	1.377	A	1.181
47	14.nov	21.nov	A 3.898	A	1.377	A	1.377	A	1.181
48	21.nov	28.nov	A 3.898	A	1.377	A	1.377	A	1.181
49	28.nov	05.dec	A 3.898	A	1.377	A	1.377	A	1.181
50	05.dec	12.dec	A 3.898	A	1.377	A	1.377	A	1.181
51	12.dec	19.dec	A 3.898	A	1.377	A	1.377	A	1.181
52	19.dec	26.dec	A 3.898	A	Rent of entire Villa only	A	Rent of entire Villa only	A	Rent of entire Villa only

Linen and Towel rental, optional: 40 EUR pr. person pr. week  
Obligatory Final cleaning, electricity, heat and water: included



### Mas du Vallon ground floor plan



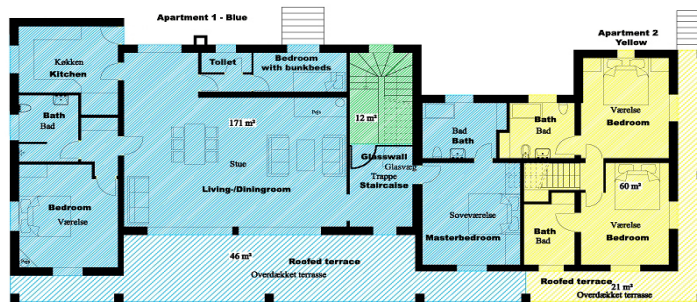
- Apartment 3**  
Løjlighed 3 = 129 m<sup>2</sup> + 32 m<sup>2</sup> terrace
- Apartment 2**  
Løjlighed 2 = 165 m<sup>2</sup> + 21 m<sup>2</sup> terrace
- Apartment 1**  
Løjlighed 1 = 171 m<sup>2</sup> + 46 m<sup>2</sup> terrace
- Common area (outdoor)**  
Fælles arealer = 36 m<sup>2</sup> + 19 m<sup>2</sup> udendørs

I alt lejligheder og fælles arealer (indendørs) = 501 m<sup>2</sup> **Total apartments and common area (indoor)**  
 Overdækkede terrasser og fælles arealer (udendørs) = 118 m<sup>2</sup> **Roofed terrace and common area (outdoor)**

MasduVallon.com © Privacy



### Mas du Vallon 1st. Level floor plan



- Apartment 3**  
Løjlighed 3 = 129 m<sup>2</sup> + 32 m<sup>2</sup> terrace
- Apartment 2**  
Løjlighed 2 = 165 m<sup>2</sup> + 21 m<sup>2</sup> terrace
- Apartment 1**  
Løjlighed 1 = 171 m<sup>2</sup> + 46 m<sup>2</sup> terrace
- Common areal - outdoor**  
Fælles arealer = 36 m<sup>2</sup> + 19 m<sup>2</sup> udendørs

I alt lejligheder og fælles arealer (indendørs) = 501 m<sup>2</sup> **Total apartments and common area (indoor)**  
 Overdækkede terrasser og fælles arealer (udendørs) = 118 m<sup>2</sup> **Roofed terrace/patio**

MasduVallon.com © Privacy