



PRICELIST - BOOKING CALENDER - FLOOR PLANS 2025
All prices are in EURO

Explanation:

A = Available

EV = Rent of entire Villa only

O = Occupied

R = Reserved

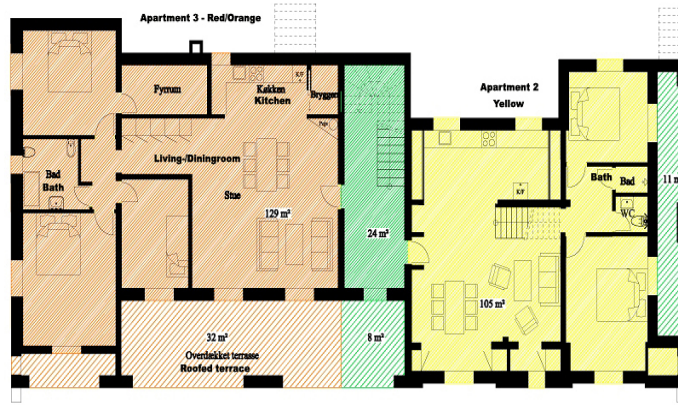
S = Special deal

Week	From	To	Entire Villa	Apartment 1 1. floor (Blue) 5 person		Apartment 2 Ground right (yellow) 5 person		Apartment 3 Ground left (red/orange) 5 person		
				EV/A	Rent of entire Villa only	EV/A	Rent of entire Villa only	EV/A	Rent of entire Villa only	
1	28.dec	04.jan	A 3.712	A	1.311	A	1.311	A	1.125	
2	04.jan	11.jan	A 3.712	A	1.311	A	1.311	A	1.125	
3	11.jan	18.jan	A 3.712	A	1.311	A	1.311	A	1.125	
4	18.jan	25.jan	A 3.712	A	1.311	A	1.311	A	1.125	
5	25.jan	01.feb	A 3.712	A	1.311	A	1.311	A	1.125	
6	01.feb	08.feb	A 3.712	A	1.311	A	1.311	A	1.125	
7	08.feb	15.feb	A 3.712	A	1.311	A	1.311	A	1.125	
8	15.feb	22.feb	A 3.712	A	1.311	A	1.311	A	1.125	
9	22.feb	01.mar	A 3.712	A	1.311	A	1.311	A	1.125	
10	01.mar	08.mar	A 3.712	A	1.311	A	1.311	A	1.125	
11	08.mar	15.mar	A 3.712	A	1.311	A	1.311	A	1.125	
12	15.mar	22.mar	A 3.712	A	1.311	A	1.311	A	1.125	
13	22.mar	29.mar	A 3.712	A	1.311	A	1.311	A	1.125	
14	29.mar	05.apr	A 3.712	A	1.311	A	1.311	A	1.125	
15	05.apr	12.apr	A 3.712	A	1.311	A	1.311	A	1.125	
16	12.apr	19.apr	O 5.237	O	1.744	O	1.744	O	1.505	
17	19.apr	26.apr	O 5.237	O	1.744	O	1.744	O	1.505	
18	26.apr	03.maj	A 5.237	A	1.744	A	1.744	A	1.505	
19	03.maj	10.maj	A 5.237	A	1.744	A	1.744	A	1.505	
20	10.maj	17.maj	A 5.237	A	1.744	A	1.744	A	1.505	
21	17.maj	24.maj	A 5.237	A	1.744	A	1.744	A	1.505	
22	24.maj	31.maj	O 6.363	O	2.226	O	2.226	O	1.911	
23	31.maj	07.jun	A 6.363	A	2.226	A	2.226	A	1.911	
24	07.jun	14.jun	A 6.363	A	2.226	A	2.226	A	1.911	
25	14.jun	21.jun	A 6.893	A	2.436	A	2.436	A	2.089	
26	21.jun	28.jun	A 6.893	A	2.436	A	2.436	A	2.089	
27	28.jun	05.jul	O 9.177	O Rent of entire Villa only	O	2.005	O	2.005	O	1.722
28	05.jul	12.jul	A 9.177	A Rent of entire Villa only	A	2.005	A	2.005	A	1.722
29	12.jul	19.jul	A 9.177	A Rent of entire Villa only	A	2.005	A	2.005	A	1.722
30	19.jul	26.jul	O 9.177	O Rent of entire Villa only	O	2.005	O	2.005	O	1.722
31	26.jul	02.aug	A 9.177	A Rent of entire Villa only	A	2.005	A	2.005	A	1.722
32	02.aug	09.aug	A 9.177	A Rent of entire Villa only	A	2.005	A	2.005	A	1.722
33	09.aug	16.aug	A 9.177	A Rent of entire Villa only	A	2.005	A	2.005	A	1.722
34	16.aug	23.aug	A 6.893	A Rent of entire Villa only	A	2.436	A	2.436	A	2.089
35	23.aug	30.aug	A 6.893	A Rent of entire Villa only	A	2.436	A	2.436	A	2.089
36	30.aug	06.sep	A 5.670	A	2.005	A	2.005	A	1.722	
37	06.sep	13.sep	O 5.670	O	2.005	O	2.005	O	1.722	
38	13.sep	20.sep	O 5.670	O	2.005	O	2.005	O	1.722	
39	20.sep	27.sep	O 5.670	O	2.005	O	2.005	O	1.722	
40	27.sep	04.okt	O 4.935	O	1.745	O	1.745	O	1.496	
41	04.okt	11.okt	A 4.935	A	1.745	A	1.745	A	1.496	
42	11.okt	18.okt	A 4.935	A	1.745	A	1.745	A	1.496	
43	18.okt	25.okt	A 3.712	A	1.311	A	1.311	A	1.125	
44	25.okt	01.nov	A 3.712	A	1.311	A	1.311	A	1.125	
45	01.nov	08.nov	A 3.712	A	1.311	A	1.311	A	1.125	
46	08.nov	15.nov	A 3.712	A	1.311	A	1.311	A	1.125	
47	15.nov	22.nov	A 3.712	A	1.311	A	1.311	A	1.125	
48	22.nov	29.nov	A 3.712	A	1.311	A	1.311	A	1.125	
49	29.nov	06.dec	A 3.712	A	1.311	A	1.311	A	1.125	
50	06.dec	13.dec	A 3.712	A	1.311	A	1.311	A	1.125	
51	13.dec	20.dec	A 3.712	A	1.311	A	1.311	A	1.125	
52	20.dec	27.dec	A 3.712	A Rent of entire Villa only	A	1.311	A	1.311	A	1.125

Linen and Towel rental, optional: 38 EUR pr. person pr. week
Obligatory Final cleaning, electricity, heat and water: included



Mas du Vallon ground floor plan



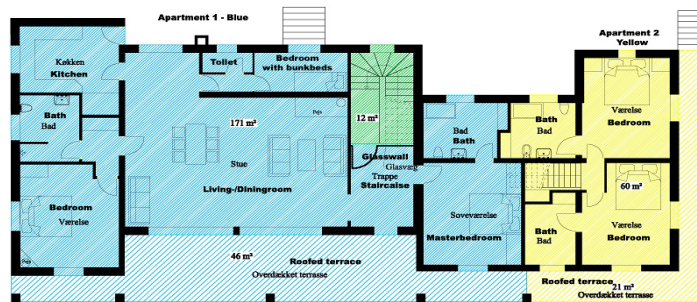
- Apartment 3**
Løjlighed 3 = 129 m² + 32 m² terrace
- Apartment 2**
Løjlighed 2 = 165 m² + 21 m² terrace
- Apartment 1**
Løjlighed 1 = 171 m² + 46 m² terrace
- Common area (outdoor)**
Fælles arealer = 36 m² + 19 m² udendørs

I alt lejligheder og fælles arealer (indendørs) = 501 m² **Total apartments and common area (indoor)**
 Overdækkede terrasser og fælles arealer (udendørs) = 118 m² **Roofed terrace and common area (outdoor)**

MasduVallon.com © Privacy



Mas du Vallon 1st. Level floor plan



- Apartment 3**
Løjlighed 3 = 129 m² + 32 m² terrace
- Apartment 2**
Løjlighed 2 = 165 m² + 21 m² terrace
- Apartment 1**
Løjlighed 1 = 171 m² + 46 m² terrace
- Common areal - outdoor**
Fælles arealer = 36 m² + 19 m² udendørs

I alt lejligheder og fælles arealer (indendørs) = 501 m² **Total apartments and common area (indoor)**
 Overdækkede terrasser og fælles arealer (udendørs) = 118 m² **Roofed terrace/patio**

MasduVallon.com © Privacy